

Equal goes digital



Welcome to the Equal 'e-zine'. This new publication from the Equal team aims to draw together news and resources related to the themes of the ESF Equal funding programme:

- Employability (in particular for those at greatest risk of disadvantage in the labour market)
- Entrepreneurship (including Social Enterprise)
- Adaptability (of the individual as well as businesses)
- Equal Opportunities (for men and women)
- Support for Asylum-seekers

They're big themes, so we're hoping there's useful information in here for everyone.

Our selection of items to feature is entirely arbitrary and reflects no other editorial policy than to simply make information accessible. Most of the information we link to from this e-zine is held on external websites over which we have no editorial control... we invite you to navigate the web at your own risk.

Of course, we want your feedback and your content suggestions - whether you are from within the 'Equal family' of Development Partnership or from outside. Please send feedback and content to ezine@ecotec.com. We aim to include as much as possible, but reserve the right to edit.

We are keen of course to extend our reach, so please feel free to forward this file on to friends and colleagues. And do use the unsubscribe button if you no longer want to receive the e-zine.

We hope you enjoy it and that you'll be reading us again soon.

Equal Support Unit Team

employability



"Two Green Papers are currently on the table and are open to consultation."

[go to page :](#)

entrepreneurship



"CREATE Equal Development Partnership is advertising a selection of workshops aimed at introducing key aspects of franchising"

[go to page :](#)

adaptability



"be prepared for the impact of age legislation due to come into force on 1 October 2006"

[go to page :](#)

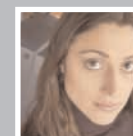
equal opportunities



"A powerful new body to put equality at the heart of modern Britain got the go-ahead on 16 February"

[go to page :](#)

asylum seekers



"The Home Office recently announced its plans for the New Asylum Model"

[go to page :](#)

[Subscribe](#)

[Unsubscribe](#)

Green Paperchase

Two Green Papers are currently on the table and are open to consultation.

The Welfare Reform Green Paper was published on 24 January 2006, marking the start of a 12 week consultation period up to Friday 21 April 2006. The Paper outlines the government's plan to remove one million people from incapacity benefit by helping them back into work. The full Paper and consultation arrangements are available on the web at: <http://www.dwp.gov.uk/aboutus/welfarereform/>.

Back in December 2005, the Government also published a Green paper on 'Reducing Re-Offending through Skills and Employment', jointly produced by the Department for Education and Skills, the Home Office and the Department for Work and Pensions. This document sets out a strategy to help reduce re-offending by improving skills and employment opportunities for offenders.

You can read and comment on this Green Paper here: <http://www.dfes.gov.uk/offenderlearning/>

Events

Assistive Technology - how equipment can help people lead a more independent life, 11 May

The event, organised in Oxford by the TATE Partnership, is targeted at people with learning difficulties, families, service providers and care managers.

For more information contact Ann Aspinall at ann.aspinall@hft.org.uk

News

RESET launch best practice site

A new website supporting best practice on the resettlement of young offenders into the community has been launched by the RESET Partnership, led by the young people's charity Rainer. The website allows partners and those with an interest in the resettlement debate to keep up to date with the project's progress. More at: www.reset.uk.net

UKC hero awards 2005

Cindy Westcarr, Vice Chair of the Unison Greater London Region Black Members Committee has been awarded the 'Ensuring Positive Futures HIV in the Workplace Hero Award'. Cindy was recognised for her work in urging all members to bring HIV back to the top of the union agenda and for combating HIV-related stigma at work.

More information

Publications

The geography of poor skills and access to work (Jan 2006)

Despite employment growth, high levels of worklessness persist for some people and in some areas. This study analyses statistics from the 2001 Census on access to work for people with poor skills in the context of important changes in the industrial and occupational profile of employment and the location of jobs.

Read all about it here

Catalyst magazine

Launched by the Commission for Racial Equality, Catalyst is a new magazine that aims to stimulate debate and analysis of high profile issues that are relevant to the CRE's concerns and responsibilities. They say: "it is essential reading for anyone interested in how concepts of race, identity, citizenship and community are continually evolving and re-shaping the society we live in". We say: get it here -

www.catalystmagazine.org

Not to be missed - free training events

CREATE Equal Development Partnership is currently advertising a selection of workshops aimed at introducing key aspects of franchising and other types of workshops, seminars, conferences and exhibitions on a host of topics affecting new businesses.

CREATE is a network of national business support organisations who aim to encourage people from disadvantaged groups to consider setting up their own businesses, using Structured Business Formats such as franchising, licensing, agency and distribution agreements, or direct selling as a business model.

As a result of the Equal programme project managers Exemplas has been able to develop a programme of seminars and workshops that helped client companies evaluate and plan their strategic growth. Clients have attended events ranging from a half-day awareness seminar through to an intensive 3 day workshop with specialist adviser support that enables participants to assess alternative growth strategies such as franchising and licensing.

For further details on dates, locations and how to book visit:
<http://www.createproject.org.uk>

News

Enterprising Britain 2006

The DTI's Enterprising Britain 2006 competition has been launched (30/01/06) to find the UK city, town, place or area that best showcases entrepreneurial expertise and aptitude.

More information

Social Enterprise action plan - Spring 2006

Speaking at the annual social enterprise conference VOICE '06 Alun Michael highlighted the four main areas that government's Social Enterprise Action Plan, due out in the Spring, will focus on: confirming the value and credibility of the social enterprise, embedding social enterprise as a recognized business model, helping to open markets to social enterprise and encouraging new entrant to social enterprise.

<http://www.sbs.gov.uk>

publications

Social Enterprise in Cambridgeshire: needs and priorities

The Social Enterprise People, a Networking Group for Cambridge Co-operative Development Agency have mapped the needs and priorities of the estimated 200 social enterprises throughout the region. Their report demonstrates the importance of social enterprises and claims they act as 'a catalyst for creative thinking and cross-fertilisation between private and voluntary sectors' and 'a vehicle for specialised public service delivery closer to the people it serves'.

Read about it here

Recent Events

Aiming Higher (Anelu'n Uwch)

PROWESS held their 3rd Annual International Conference at Cardiff City Hall on 8 and 9 February. More details at:
<http://www.prowess.org.uk>

Voice '06

Over 800 delegates attended the Social Enterprise Coalition's second national conference at the Manchester International Conference Centre in January. For more information, including power-point presentations from the breakout sessions visit:
<http://www.socialenterprise.org.uk>

Will you still need me, when I'm 64?



In Britain today, people are living longer than ever before.

If you are aged 50 now, on average you could live for another 30 years or longer. Therefore it is essential that employers are educated in the skills and value of older workers - and are prepared for the impact of age legislation which is due to come into force on 1 October 2006.

This legislation will mean all employers, providers of vocational training, trade unions, professional associations, employer organisations and trustees, and managers of occupational pension schemes will have new obligations to consider.

The Department for Work and Pensions is currently raising awareness with employers through the Age Positive and Be Ready information campaigns.

For further information on these campaigns:

Age Positive www.agepositive.gov.uk

News

The wise archive

A website designed to enable older people to share their experiences of work. A rich source of information and knowledge on older people and work.
www.wisearchive.co.uk

Santa Claus sports institute, Lapland (where elf ?)

At the Santa Claus Sports Institute in Lapland, a group of older Finns get to leap around on climbing frames, swings and see-saws in the latest Finnish wheeze to get people more active.

<http://news.bbc.co.uk/1/hi/world/europe/4691088.stm>

Learning To Get Back To Work - NIACE conference on welfare reform

A conference from the National Institute of Adult Continuing Education (NIACE) in London on Thursday 16TH February examined the challenges ahead for welfare reform. 'Learning to get back to work' heard about approaches currently being used across the country. Rt Hon Margaret Hodge MP, Minister of State at the Department of Work and Pensions made the keynote address.

For more details contact Ed Melia, NIACE Press Officer on 0116 204 4248 or 07795 358 870 or ed.melia@niace.org.uk

Events

Gloucestershire Neighbourhood College's transnational partnership 'Learning Impulse', held its first official meeting in Hungary in July 2005. 'Learning Impulse' comprises a wide range of voluntary, education and public sector bodies but all partners share a common theme of education and employment. See www.gnnp.co.uk for details.

Want to spend time on an exciting project in Oxford that provides opportunities for older workers benefit from further education? Then check out Ransackers! On this project students spend one term at a participating college and produce a research project on an area of interest that increases personal skills and is of benefit to the community. For details see www.bgop.org.uk or contact Liz Mathews at 01865 517820 or lmathews@ruskin.ac.uk

The STEPS (Steps Towards Empowerment, Partnership and Success) DP in Strathclyde will be holding the official launch of its transnational partnership on 21st March 2006. For details see www.equal-steps.com

Equality in the workplace takes centre stage

Equality in the workplace takes centre stage

A powerful new body to put equality at the heart of modern Britain got the go-ahead on 16 February when the Equality Act gained Royal Assent.

Individuals experiencing discrimination and prejudice on the basis of race, gender, disability, age, religion and belief or sexual orientation will now have easier access to help and support from October 2007.

CEHR will work with individuals, communities, businesses and public services to find new, more effective ways to give everyone in society the chance to achieve their full potential.

The plan is to put expertise on equality, diversity and human rights in one place. It will do this by merging the work of the Disability Rights Commission and the Equal Opportunities Commission from October 2007 and the Commission for Racial Equality from 2009.

CEHR will also have a better range of powers to enforce legislation flexibly and promote equality for all.

Read full version of the Act

News

SME's & Gender Equality - Why bother? Tuesday 25 April eureka!, Halifax, West Yorkshire

The JIVE Development Partnership is holding a breakfast seminar for employers on how addressing workforce diversity can improve your bottom line.

The event is aimed at SET and built environment Diversity/HR Managers, Managing Directors, Proprietors and other Key Decision Makers.

JIVE Project Manager Ros Wall will reveal how JIVE can help employers reduce the major barriers to equality and address occupational segregation whilst highlighting practical solutions. Summitskills Operations Manager Kevin Dowd will talk on how gender diversity affects industry and present the business case for gender diversity. And Jane Worrell from Acas will discuss current and forthcoming legislation and how it will affect business.

To Book contact: setwomenresource@bilk.ac.uk or call 01274 436485

Publications

EOC Newsletter

The Equal Opportunities Commission's E-news first edition of 2006 was published in January. Access the newsletter at www.eoc.org.uk

Commission communication on non-discrimination and equal opportunities

Five years after the adoption of the anti-discrimination legislation, in June 2005 the European Commission issued a new framework strategy for EU action on antidiscrimination. For more details of the framework strategy visit

More information

Other

EOC 'Moving on up' investigation

In October 2005, the Equal Opportunities Commission launched 'Moving on up', a major investigation into the participation, pay and progression of ethnic minority women in the GB labour market. Read more about the investigation and get involved at www.eoc.org.uk/bme

Commission celebrates Equal success stories from across Europe

The Directorate-General for Employment, Social Affairs and Equal Opportunities published its report on a series of success stories from the Equal programme in September 2005.

More information

New Asylum Model



As part of the Government's five year strategy for asylum and immigration, the Home Office recently announced its plans for the New Asylum Model (NAM). Under the model claimants will be assigned to a tailored application process based on the characteristics of their claim and new teams of case owners will be in place to process claims from beginning to end. The Government hopes where specialist case owners are responsible for the entire progression of each claim; both the case and the claimant will be managed more effectively and in a shorter time period.

Home Office Minister Tony McNulty said: "the new system aims to deliver a more efficient and effective system - ensuring those with well founded claims are integrated faster, while quickly removing those who are unsuccessful. It is better for all concerned that claimants know sooner rather than later whether they will be granted the right to remain in the UK".

The full press release visit:

The Refugee Council have responded with a briefing response, including an assessment of the implications for asylum seekers themselves (in particular vulnerable groups) and for support organisations.

www.refugeecouncil.org.uk

News

London Research Database

The Information Centre about Asylum and Refugees (ICAR) is to launch a Researching Asylum in London (RAL) project to develop and maintain a web-based database of research on asylum and refugee issues in London. The research is aimed at policy-makers and practitioners and will be the first of its kind in the UK. For more information visit: www.icar.org.uk/RAL

National Refugee Integration Forum (NRIF)

NRIF is a central hub for national, regional and local practice to identify and suggest ways of tackling the issues that refugees face. A website dedicated to the work of the Forum was launched by the Home Office on 7 February. The site is still under construction, but visit www.nrif.org.uk for an overview of the five sub-groups it will contain information on.

Publications

An Equal future for asylum seekers: Investing in Inclusive Communities.

The Report summary for this Good Practice and Awareness raising event held in September 2005

More information

Asylum and Immigration Act 2004 - Section 9

The Refugee Council and Refugee Action have published a report based on their casework experience and the contact they have had with many of the families affected by 'Section 9' (the removal of support to families who have reached the end of the asylum process having 'failed to take reasonable steps' to leave the UK).

<http://www.refugeecouncil.org.uk>

Attitudes towards asylum seekers, refugees and other immigrants

The Commission for Racial Equality has published a literature review discussing attitudes towards asylum seekers, refugees and other immigrants.

More information